

WELCOME TO THE VANFAX NEWSLETTER.

WHAT'S NEW AT VANFAX

TESLA

**INDUSTRY AND MARKET INFORMATION**

**TESLA OEE Parts**



MODEL 3

Introduction Year  
2018

**58%**

MODEL	MIN YEAR	MAX YEAR	NAGS PARTS
3	2017	2021	DW02574
3	2022	2024	DW02852

MODEL	MIN YEAR	MAX YEAR	Cabin Filters PART #
3	2017	2021	CF12774
3	2022	2024	CF12774

MODEL	MIN YEAR	MAX YEAR	Wiper PART #
3	2017	2021	See image
3	2022	2024	See image



MODEL Y

Introduction Year  
2020

**27%**

MODEL	MIN YEAR	MAX YEAR	NAGS PARTS
Y	2020	2021	DW02746
Y	2022	2024	DW02853

MODEL	MIN YEAR	MAX YEAR	Cabin Filters PART #
Y	2020	2021	CF12774
Y	2022	2024	CF12774

MODEL	MIN YEAR	MAX YEAR	Wiper PART #
Y	2020	2021	See image
Y	2022	2024	See image

**PREMIUM PERFORMANCE**  
TRICO Force

Driver Part# 25-260      Passenger Part # 25-190



**BEAM**  
TRICO Flex

Driver Part# 18-260      Passenger Part # 18-190



TESLA MODEL 3 & Y REPRESENT 85% OF TESLA'S CAR PARK

## TECHNICAL INFORMATION

### THESE ARE ADDED PARTS YOU MAY OR MAY NOT NEED IN REPLACING A TESLA WINDSHIELD

The jumper harness on some Tesla vehicles has 2 pins and the windshield requires three. Fortunately, Tesla has developed a new “jumper harness” adapter for the Model 3 and Model Y that will allow 3-pin windshields to be installed on vehicles with 2-pin inputs.

## Model 3 and Y OEM Windshield Jumper Harness Installation Instructions

01

Using the adaptor, install the jumper harness to the windshield heater connector and the heater harness on the vehicle.

02

Use a cable tie to secure the heater connector harness and the main front harness to the vehicle body.

03

Once secure, clip the excessive the from the cable tie.

Note the location of the cable ties depending on the vehicle's harness.

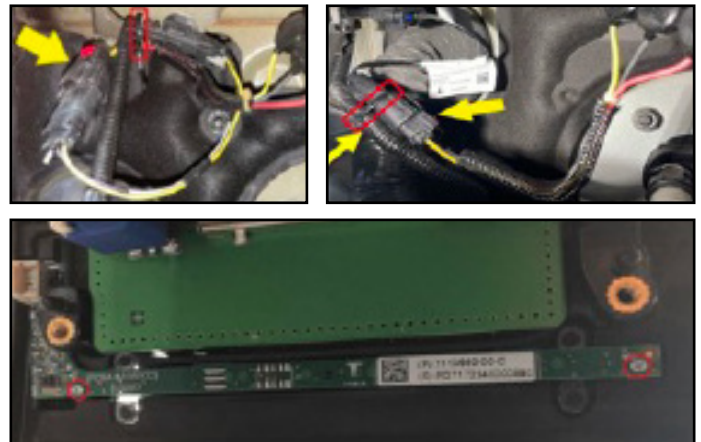
### Jumper Harness - OEM Part #'s

Model 3	1782284-00-A
Model Y	1782285-00-AParts

### Humidity Sensor PC Board - OEM Part #'s

Model 3	1462944-00-A (service Kit - HVAC Sensor)
Model Y	1515037-00-C (Relative Humidity & Temp Sensor)
Model 3 & Y	1128268-00-B (Bolts)

To procure these parts, please reach out to your nearby Tesla dealer. Here's a link to guide you through their Owners Manual for assistance.



<https://epc.tesla.com/en-CA/landingpage>

## TESLA ADAS RECALIBRATION

### Repair Manual recalibration requirements

#### Static recalibration

Tesla Procedure	Remote Calibration
Tools	Tesla Tool-Box3 to connect to the vehicle
Recalibration Type	FFC Pitch Verification Angle (PVA)
Duration	+/- 30 minutes

#### Dynamic recalibration

Tesla Procedure	Self-Calibration drive
Tools	Tesla Tool-Box3 to connect to the vehicle
Recalibration Type	Manual driving is required for calibration
Duration	+/- 30 minutes

#### Cable for Recalibrating

CABLE TYPE	FITS MODEL	YEAR MODEL
RJ45/5-PIN Sumitomo (7')	Tesla Model 3	2021 & Less
RJ45/5-PIN Sumitomo (7')	Tesla Model Y	2021 & Less
RJ45/JR45 (7')	Tesla Model 3	2022 & Up
RJ45/JR45 (7')	Tesla Model Y	2022 & Up



Self-calibration can take up to 100 miles (160 km) of manual driving depending upon the road type and conditions. Until self-calibration is complete, the message “Autopilot Features Currently Unavailable: Manual Driving Required While Camera is Calibrating” is displayed if an attempt is made to engage an Autopilot feature.